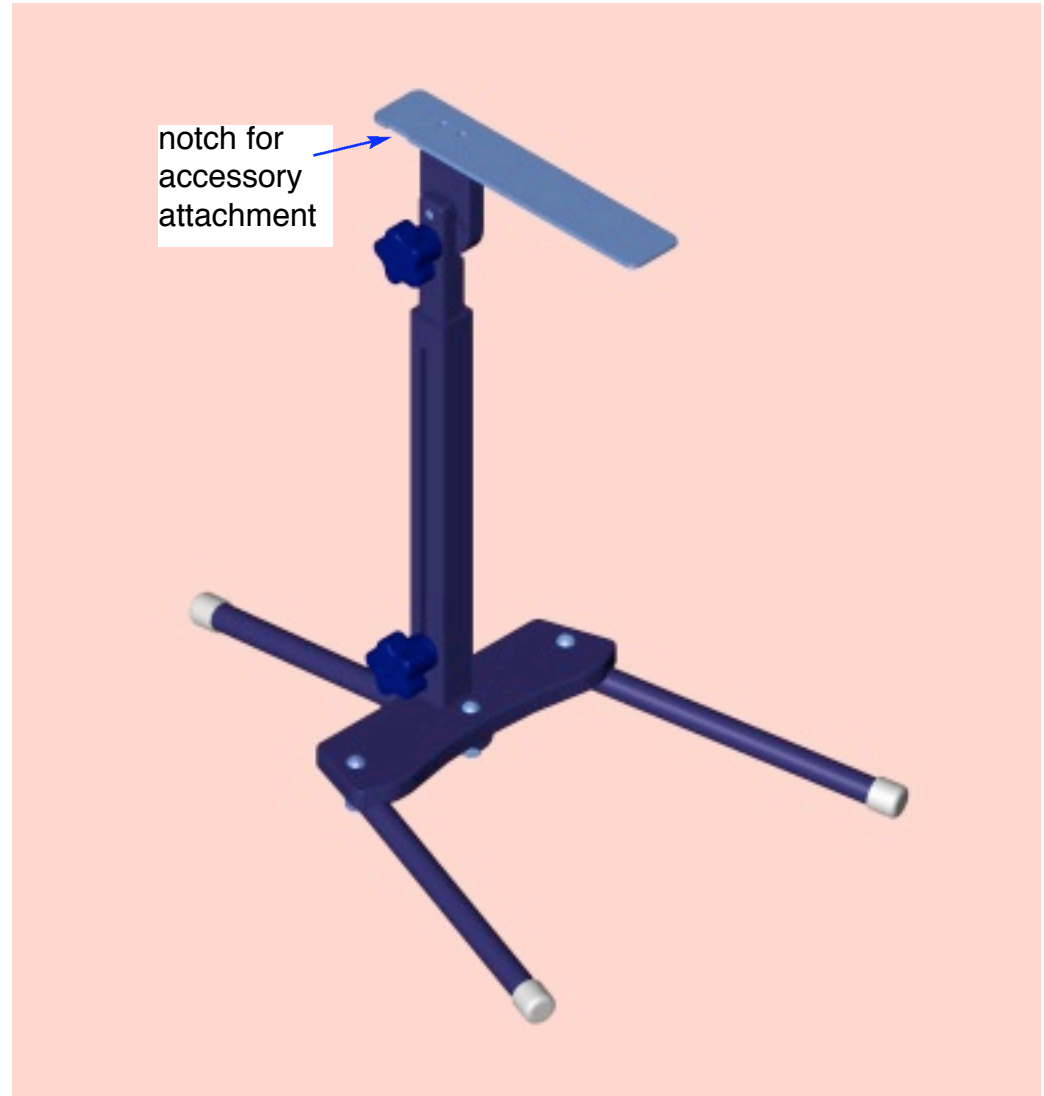


Foot stand accessories

Basic foot stand with eight inch long plate A-2-300

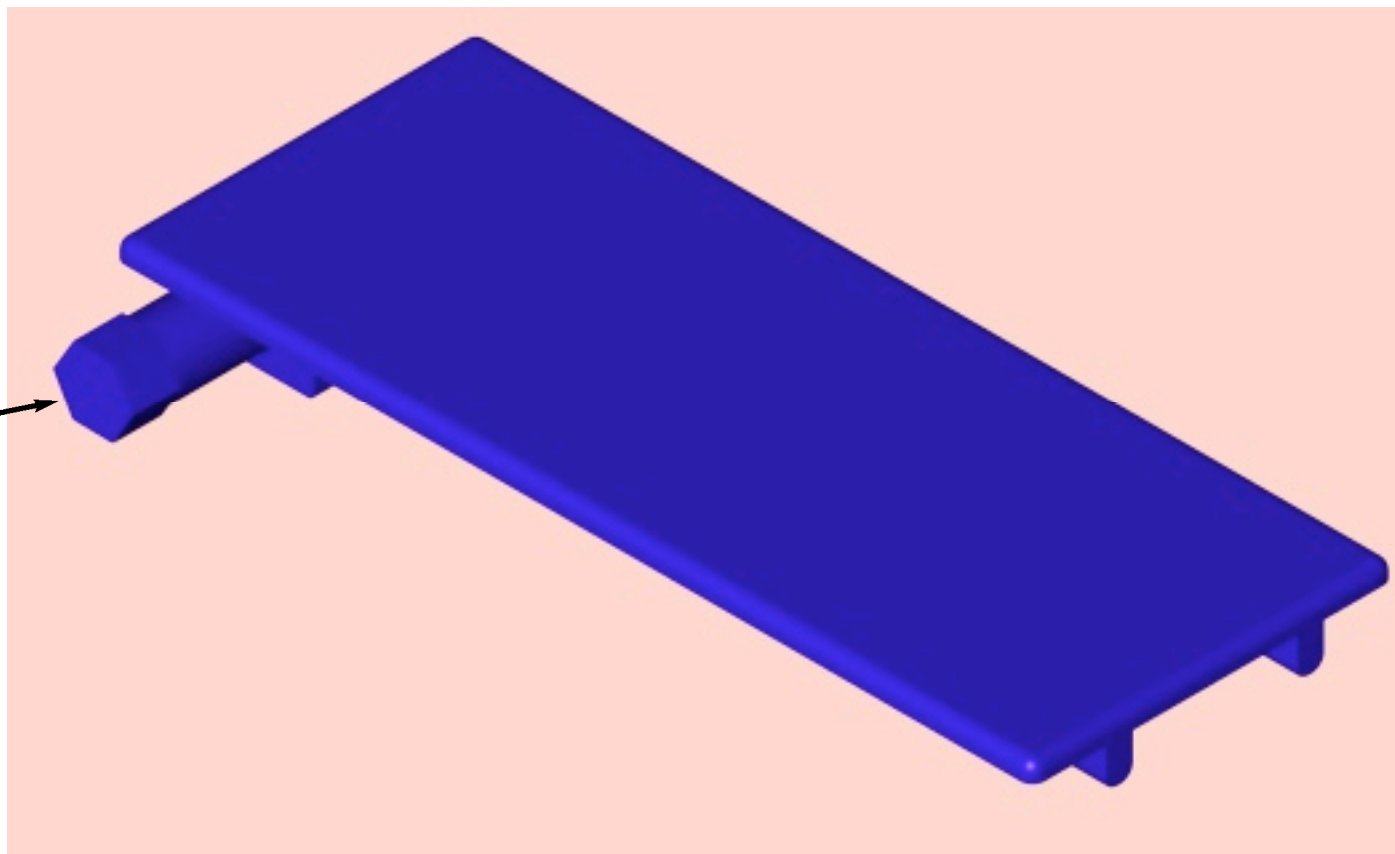
Basic foot stand with 10 inch long plate A-300B/10

Complete set FSA-2-350, consists of: basic stand, with eight inch long plate, leg support, wide plate, and heel & foot support



Wide Plate 2-355

for attachment to
a notch in the foot
plate



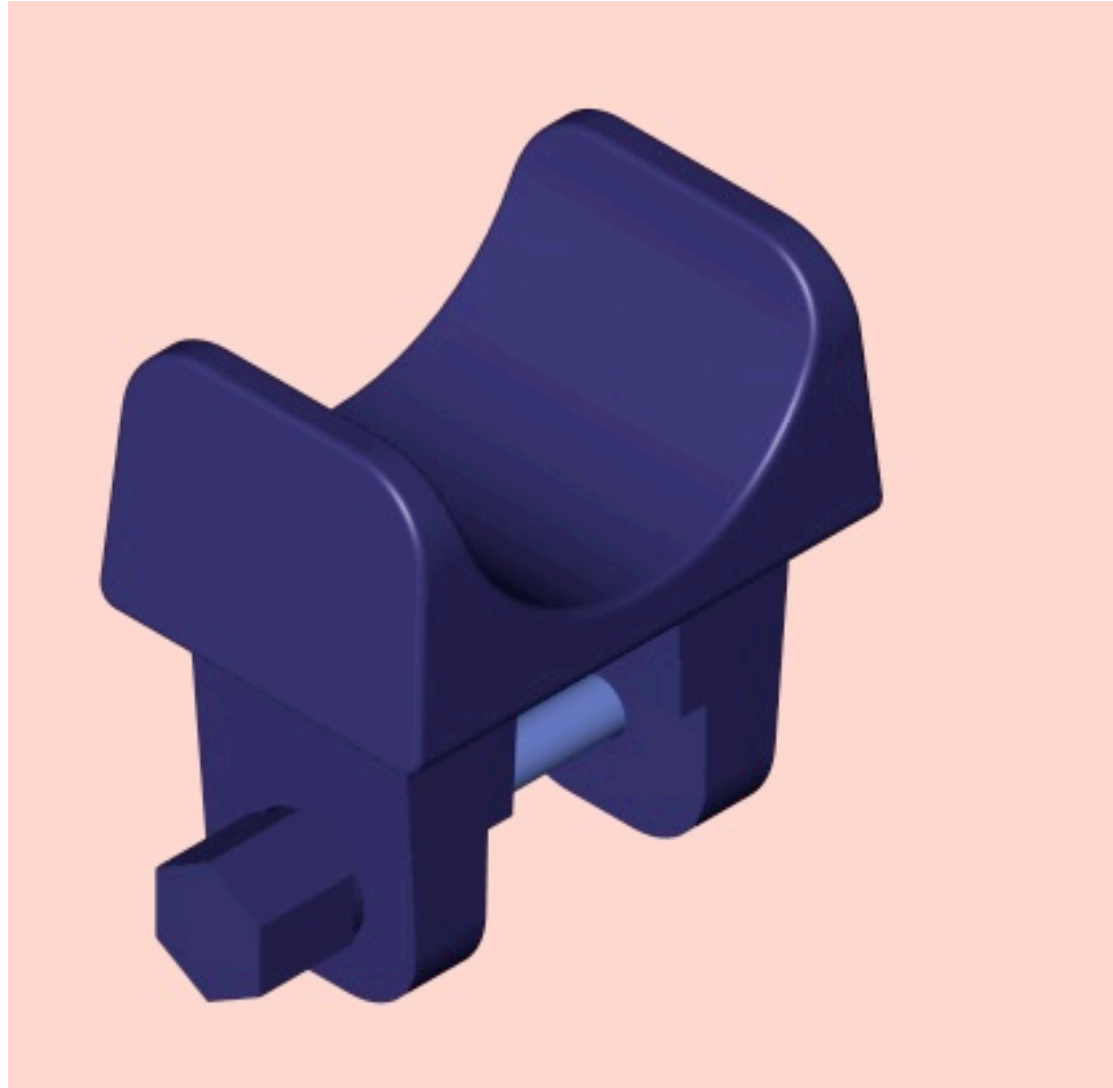


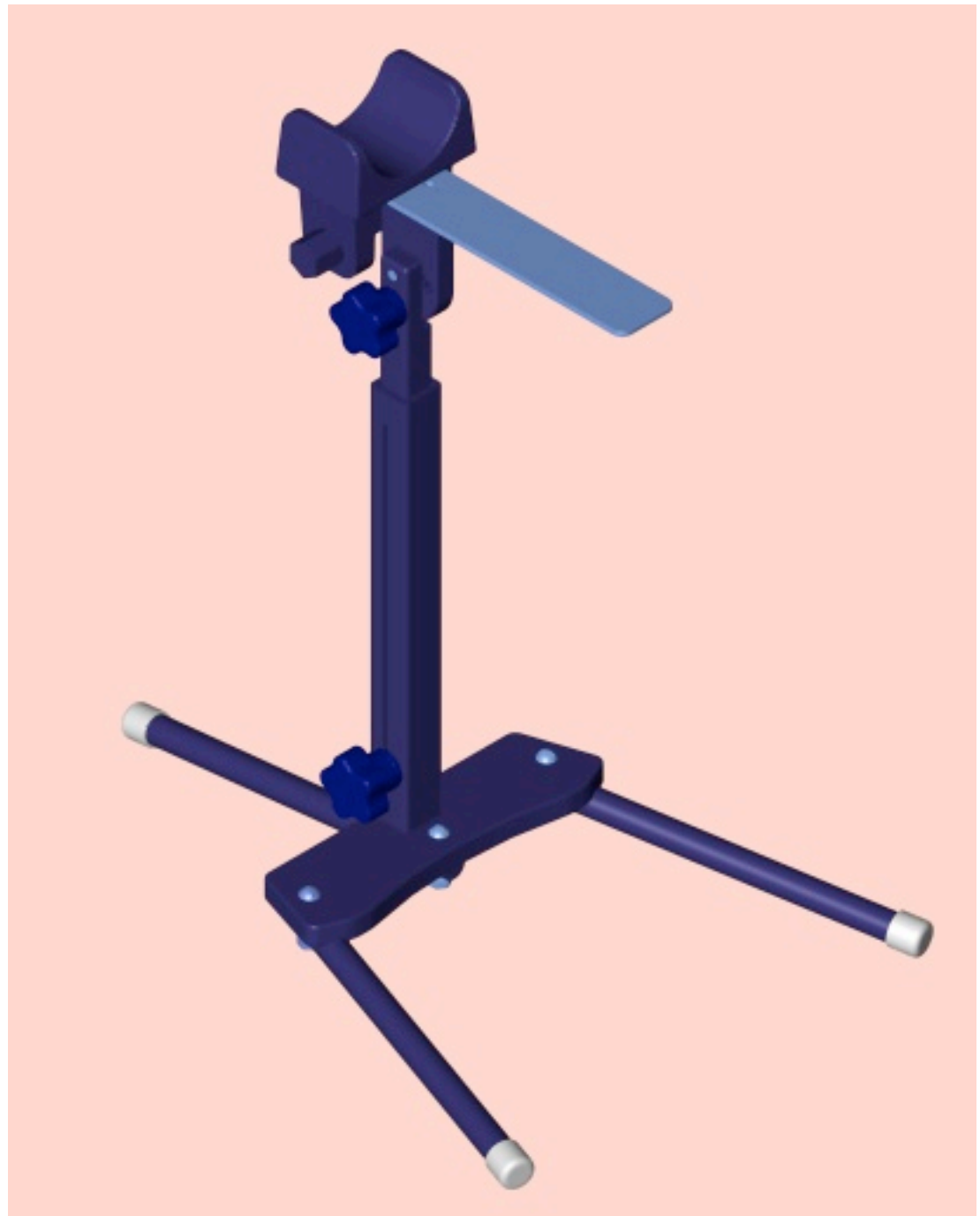
All accessories are attached to the rear of the foot plate or to the heel and foot support base



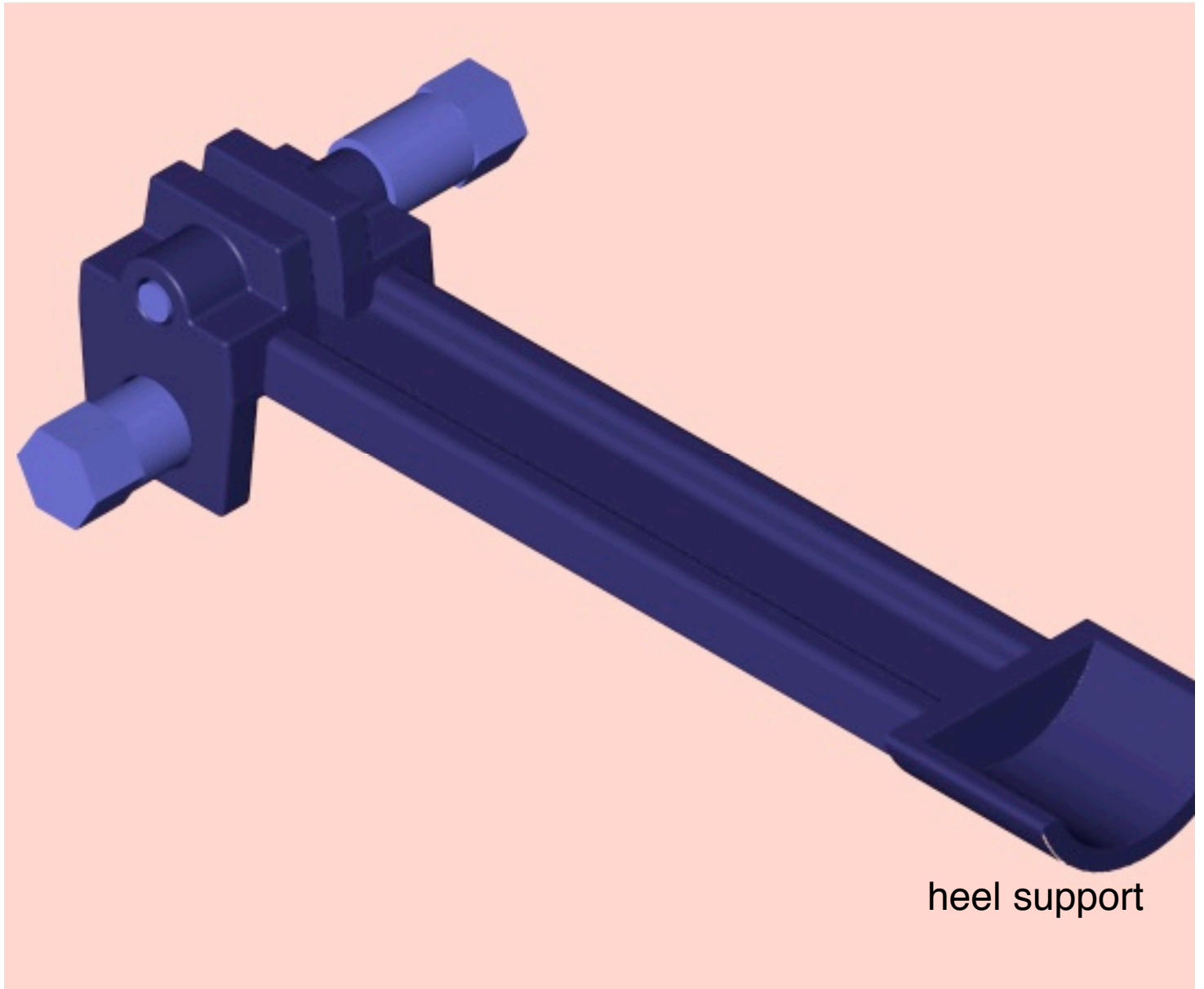


Leg support 2-360





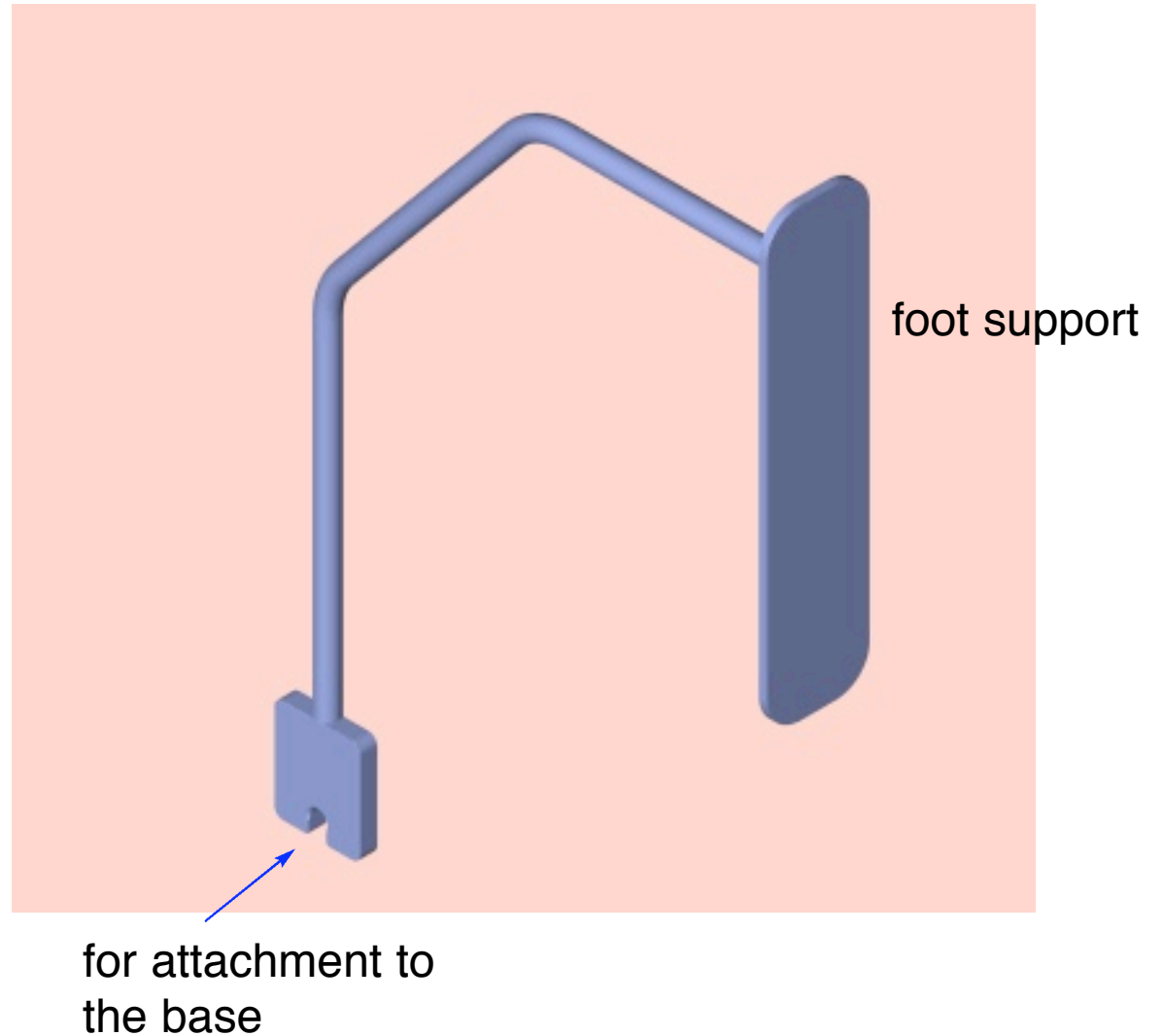
Heel and foot support base, one of 3 components, A-2-365

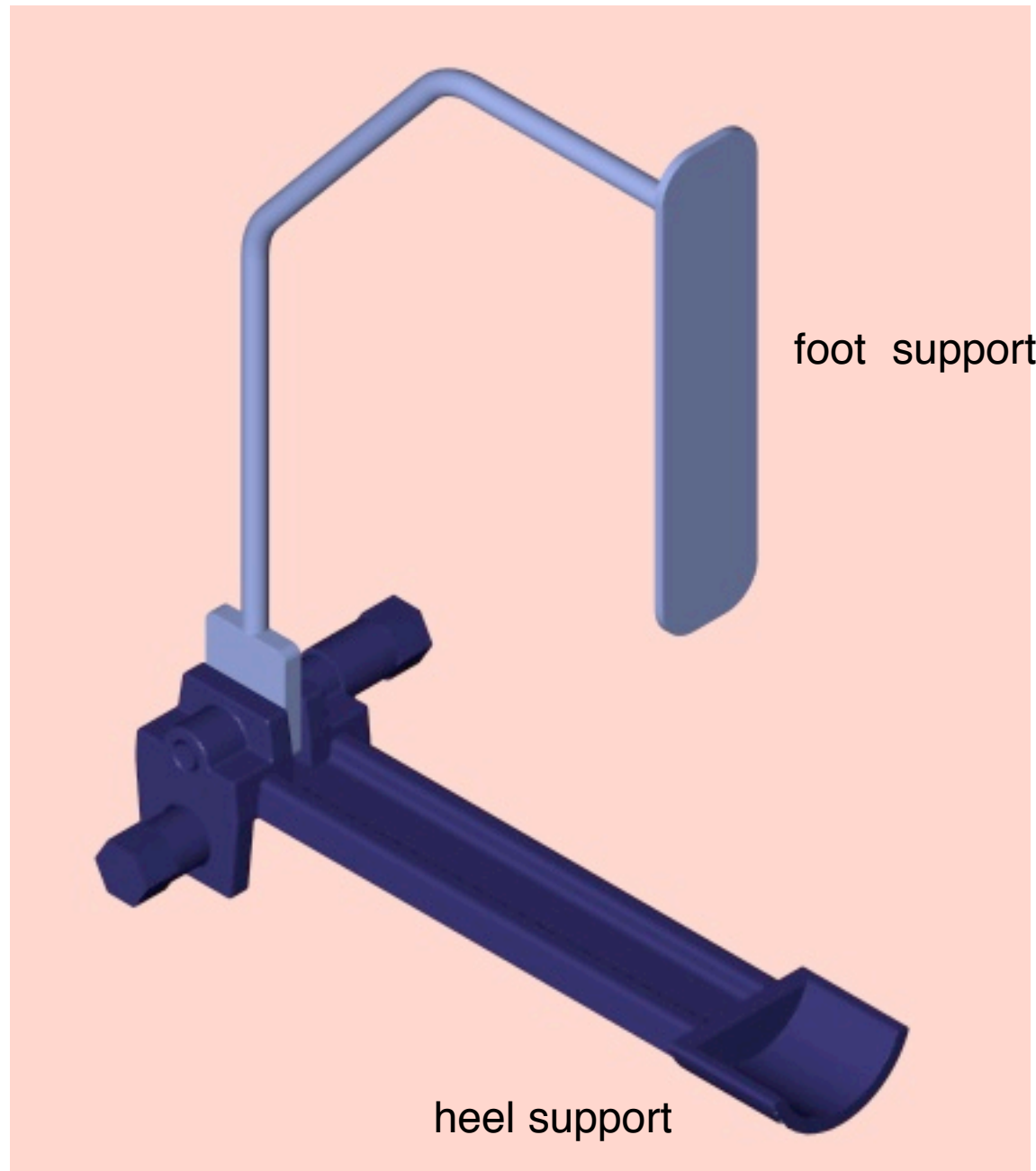


heel support



Heel and foot support, one of 3 components, A-2-365

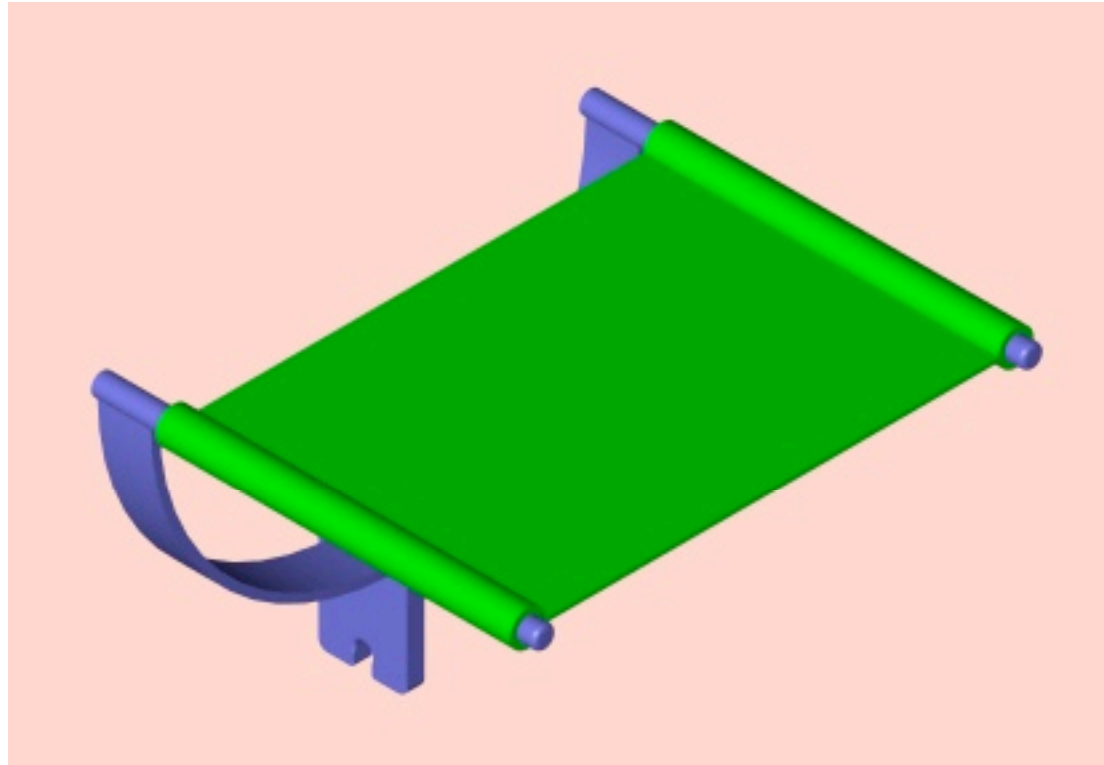




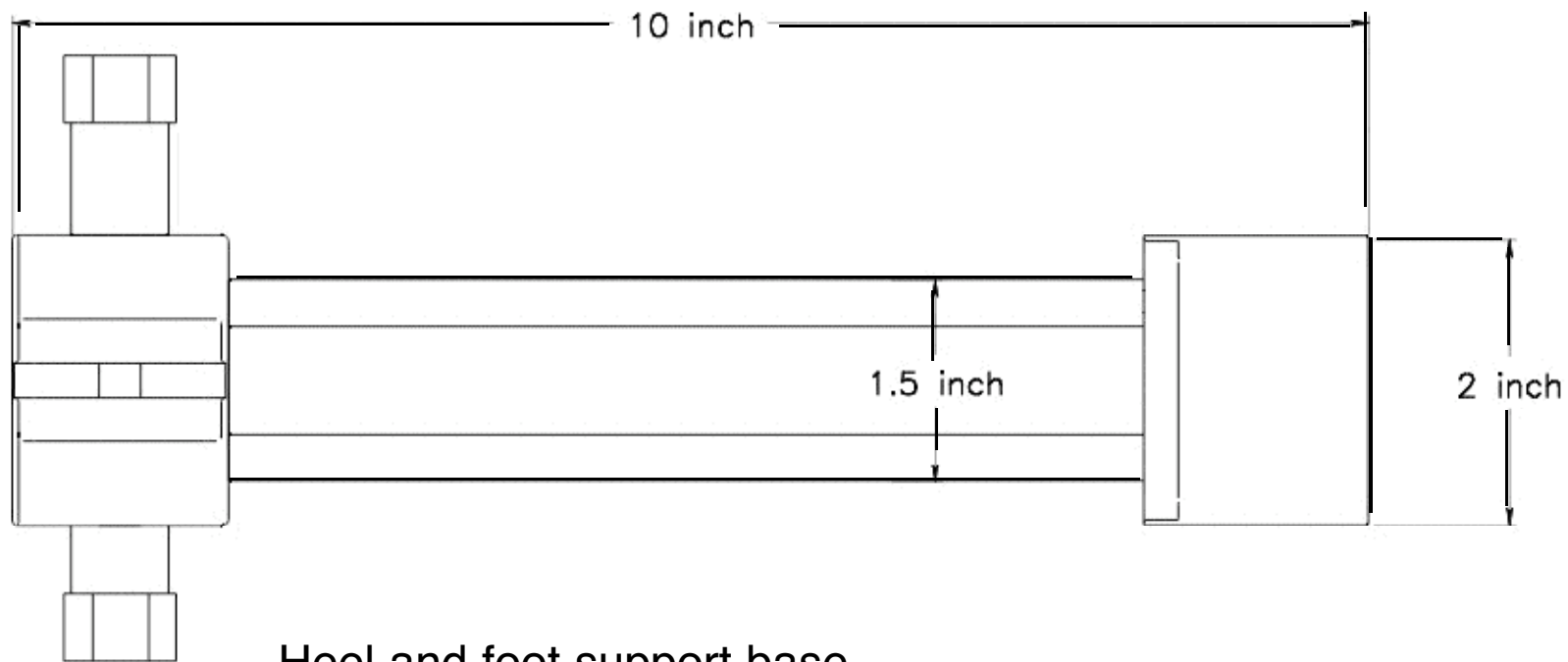


Heel and foot support, one of 3 components, A-2-365

supports cast for final molding

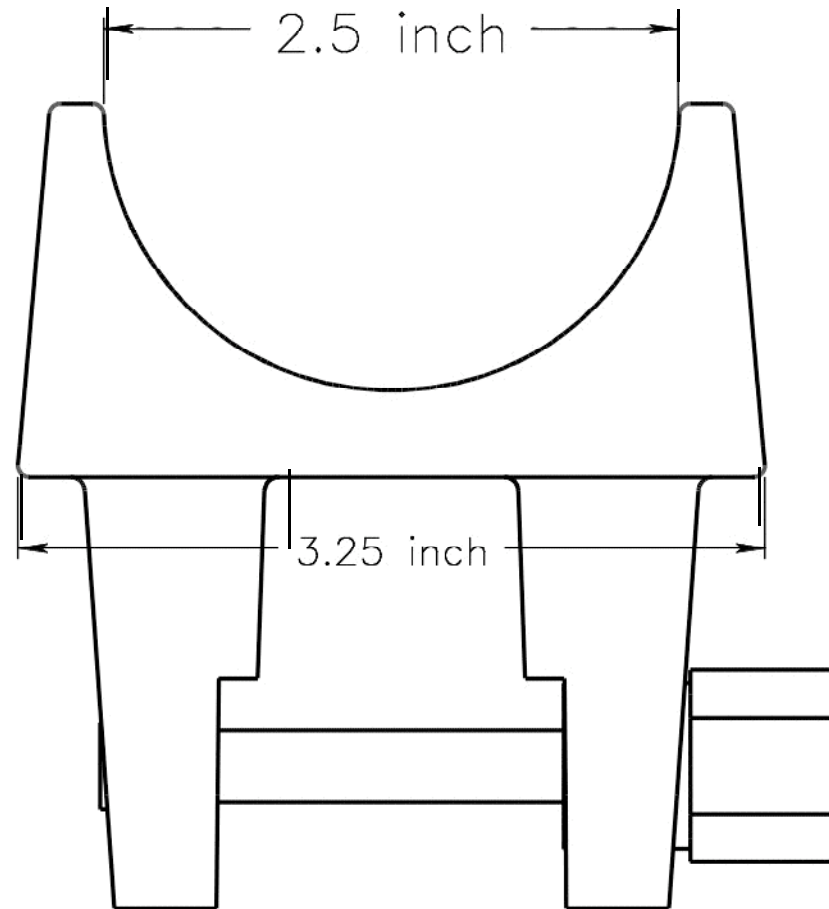




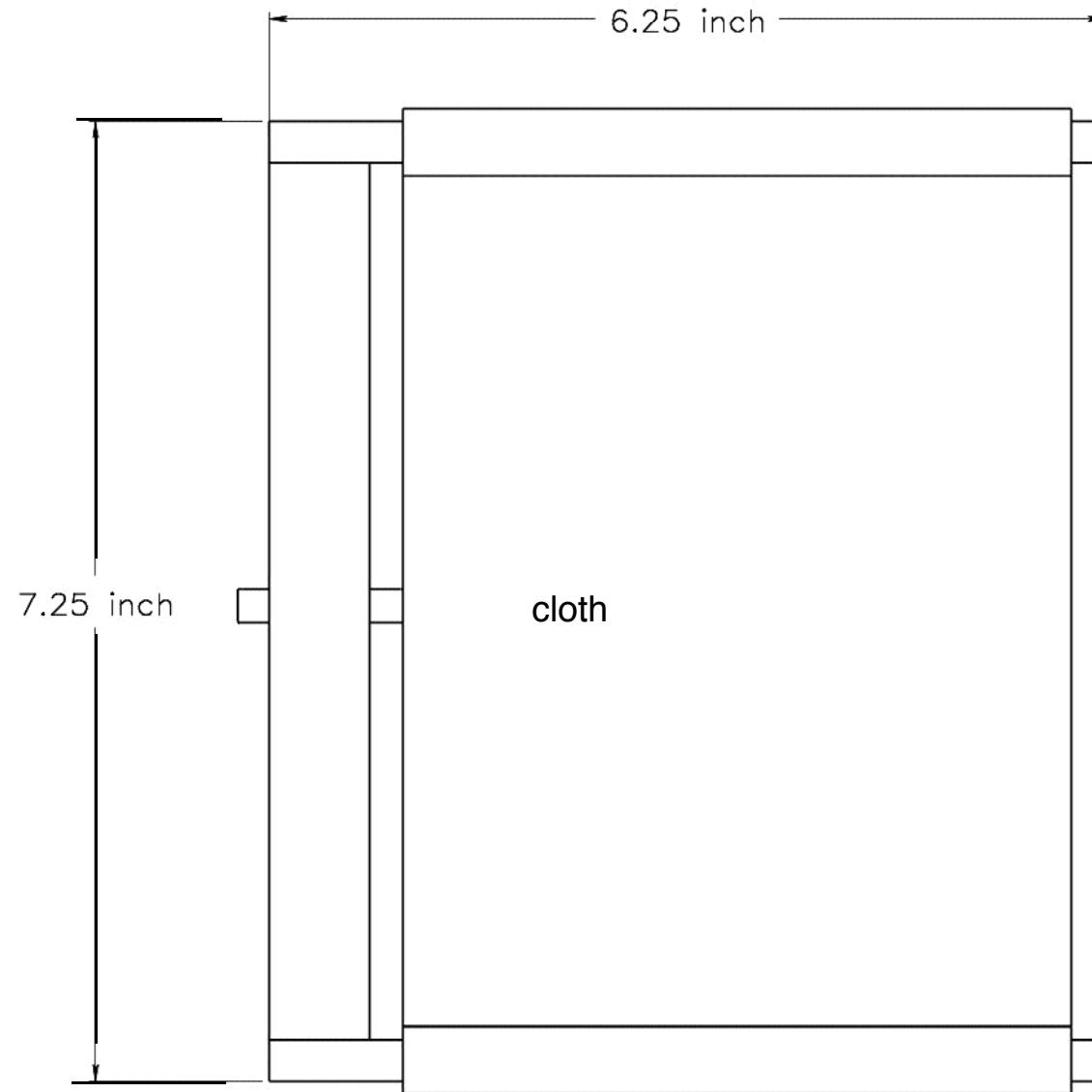


Heel and foot support base,
top view

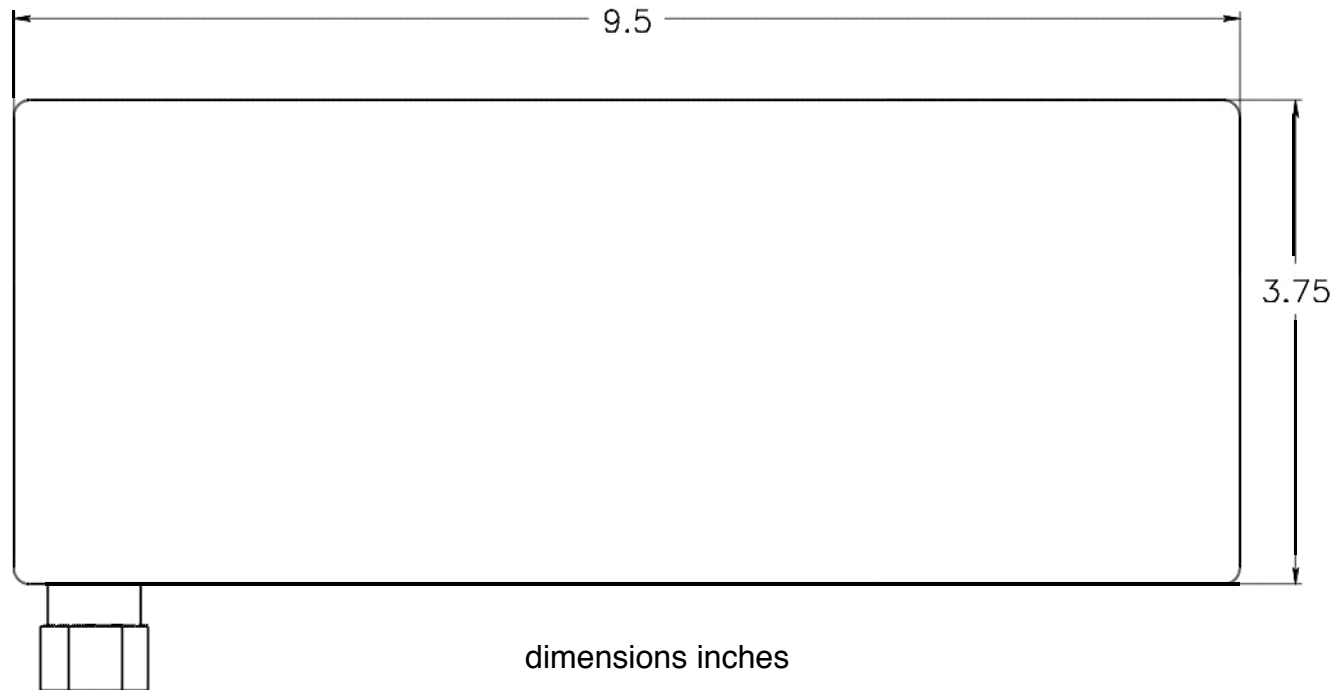
Leg support,
front view



Heel and foot
support,
top view



Wide plate,
top view



Heel and foot support,
side view

